

# Fraclight



## Hydrodermabrasion Technology

REVIVE

POWERED BY  TENTREK

# Fraclight \_\_\_\_\_

FRACTIONAL IPL

**New,  
sophisticated  
and safe.**

[www.tentrekusa.com](http://www.tentrekusa.com)  
[www.reviveregenerative.com](http://www.reviveregenerative.com)

**REVIVE**  
POWERED BY  TENTREK





REVIVE

Hair Removal

CHR MODE  
Thin Hair  
640 nm

CHR MODE  
Thin Hair  
680 nm

CHR MODE  
Brown & Black  
Hair 755 nm

SHR MODE  
Thin Hair  
640 nm

SHR MODE  
Thin Hair  
680 nm

SHR MODE  
Brown & Black  
Hair 755 nm

Skin Type 1 2 3 4 5 OK

BACK

# The World's First Fractional IPL

Fraclight treats a variety of dermatological conditions using its **140 fractionated microcells**, delivering a wide band of filtered intense pulsed light that can target multiple chromophores simultaneously and improve the overall appearance of the skin.

With its fractional wavelengths, Fraclight is indicated for the treatment of pigmented lesions (such as, **ephelides, solar lentigines**), active **acne, fine wrinkles**, and general photorejuvenation in skin types I–IV.

Thanks to its wide spot, Fraclight emits energy in a controlled and efficient manner.

**Fraclight**

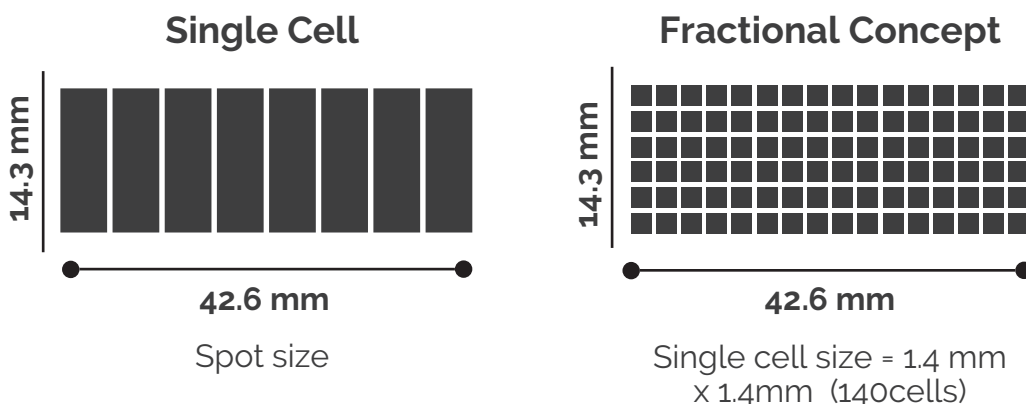


# Always homogeneous

SAFE TREATMENTS WITH THE BEST TECHNOLOGY

## Fractional Concept

Fraclight utilizes a **fractional IPL** design in which the treatment spot is divided into independent microcells. This helps promote consistent, controlled energy delivery and enhances patient comfort. (RTCTECH).



## Real Time Cooling - RTCTECH

Incorporates integrated sensors that monitor the applicator temperature in real time. This allows for enhanced thermal control during treatment, supporting patient comfort and minimizing the risk of excessive skin heating.

**Fraclight**



# Smart Mode

## SMART AND INTUITIVE SYSTEM

**Technology 3Tech** is an intelligent and intuitive system that allows you to select the treatment by logging the parameters of the equipment automatically, minimizing human error in just **3 clicks**:

**1. Treatment:** when entering the smart menu, Fraclight allows you to choose the type of treatment to be performed by adjusting the parameters automatically.

**2. Choice of phototype:** once the desired treatment has been chosen, the next step is to choose the skin phototype, starting from I to IV.

**3. Ready!** third and last step that will make Fraclight start with the chosen treatment.

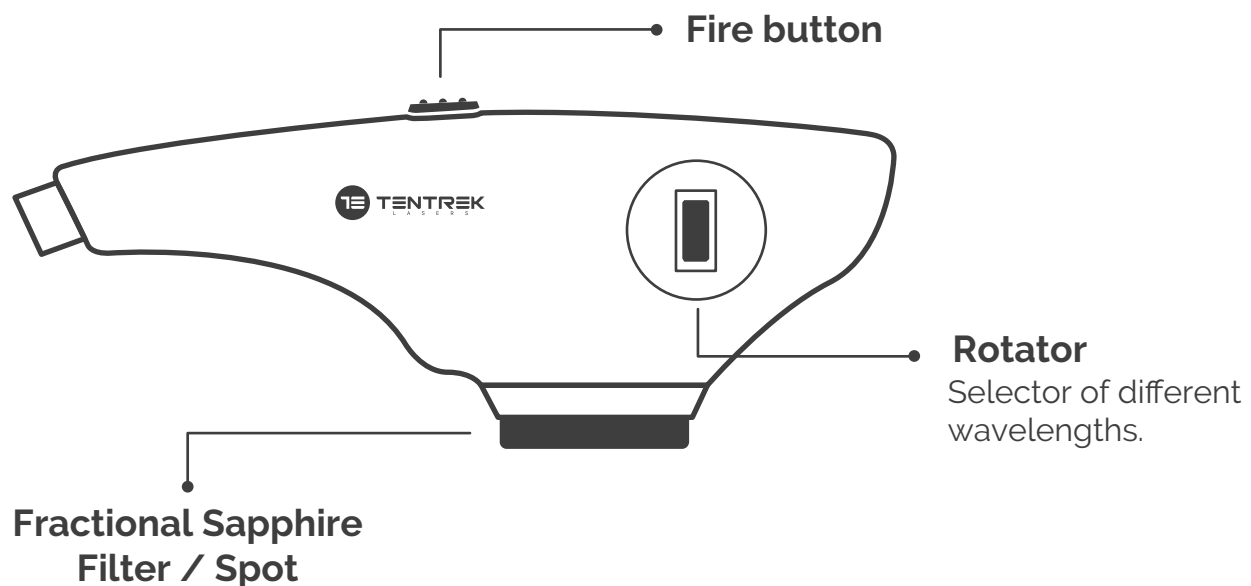


# An IPL like no other

GREATER SAFETY AND COMFORT IN EACH SHOT

## Rotating Technology - RTLTECH

Fraclight allows easy selection of a desired wavelength range using a rotator mounted on the handpiece, without replacing the filter or handpiece.



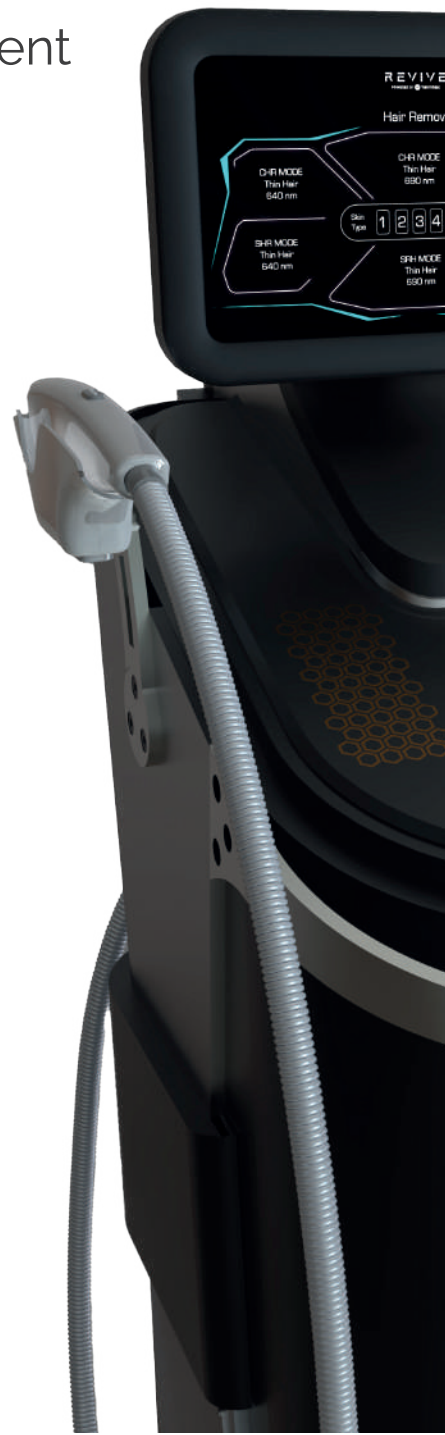
Fraclight allows safe handling of the equipment and maximizes the results of the treatments in each skin phototype.

**Fraclight**



# Multiple Wavelengths

Fraclight's fractional IPL system is indicated for the treatment of **benign pigmented lesions** (such as ephelides), **acne vulgaris**, and **hair reduction** in skin types I–IV. Its large spot size allows efficient coverage of treatment areas, while its fractional design supports consistent energy delivery and patient comfort.



## Standard

**K:** 415 - 950nm

**A:** 560 - 950nm

**C:** 640 - 950nm

Thanks to its real-time temperature monitoring, Fraclight offers enhanced thermal control during treatment. This design supports patient comfort and helps reduce the risk of excessive skin heating.



## Alex

**C:** 640 - 1200nm

**D:** 695 - 1200nm

**F:** 755 - 1200nm

# Clinical Cases

Learn about some of the results with Fraclight:



**PIGMENTARY LESIONS**  
Courtesy: Dr. Olga Forero



**LENTIGINES**  
Courtesy: Dr. Olga Forero



**LENTIGINES**

Courtesy: Dr. José Luis Martínez



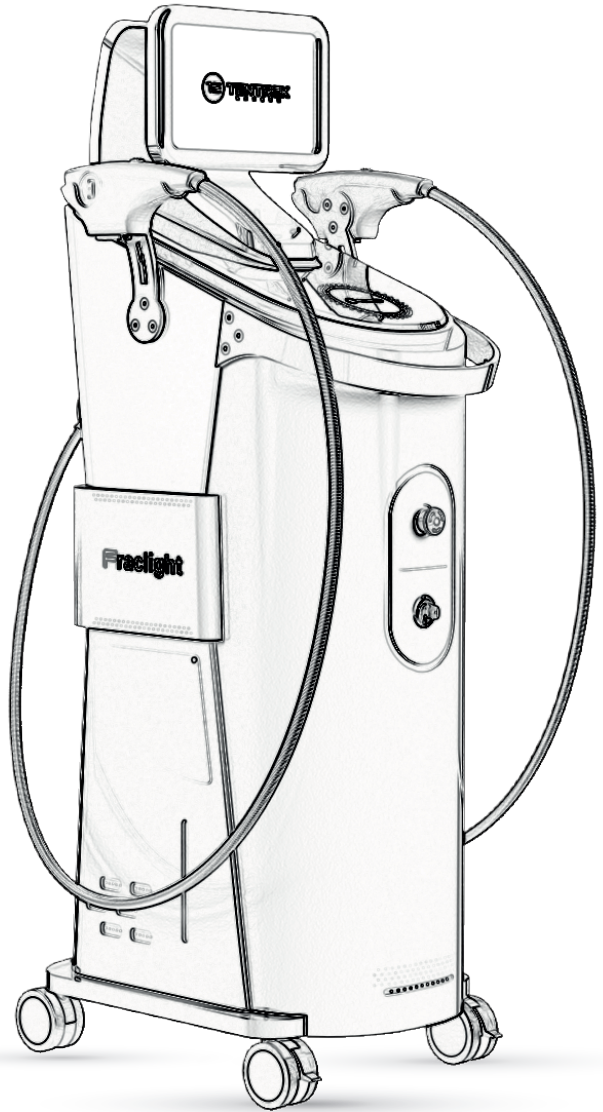
**PIGMENTED LESIONS**

Courtesy: Adaskin Chile



**FRECKLES**

Courtesy: Dr. Yveliss Sierralta



# ———— Data Sheet

<b>Light source</b>	Split (Intense) Pulsed Light (Xenon lamp)
<b>Wavelengths</b>	415~950nm, 560~950nm, 640nm~950nm
	Optional 640~1200nm, 695~1200nm
<b>Fluence</b>	5~40J / cm <sup>2</sup>
<b>Spot size</b>	14.3 X 42.6mm
<b>Pulse sequence</b>	Single, Double, Tripple Pulses, SHR mode
<b>Pulse duration</b>	2.0 ~ 35.0ms
<b>Pulse delay</b>	3.0 ~ 60.0ms
<b>Repetition rate</b>	1Hz, 3Hz, 5Hz (per second)
<b>Light conduction</b>	Quartz/ Sapphire Coupling
<b>Electrical requirements</b>	110V/16A, 50/60Hz
<b>Physical dimensions</b>	1230x520x360mm
<b>Weight</b>	60kg / 132lb

# Fraclight



REVIVE  
POWERED BY TENTREK

